

POWER PROBE®

MULTIPURPOSE BUTANE
SOLDERING TOOL

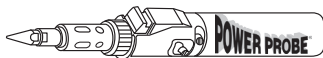
PPSK Instruction Manual

<https://solderingironguide.com>

OPERATING INSTRUCTIONS

WARNINGS:

1. Do not fill gas or store near open flame, heater or combustible materials.
2. Use only high quality Butane Gas.
3. Butane Gas is highly flammable, please handle with care.
4. Do not drop, puncture, or incinerate.
5. Do not store or operate in a place that temperature is higher than 50°C or 122°F.
6. Keep out of reach of children.
7. Cool down before putting protective cap on or storing.
8. Do not try to overkill the tank!



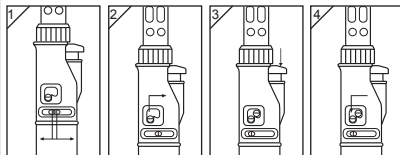
GAS FILLING AND REFILLING



1. Ensure the Switch is turned to the 'OFF' Position before filling.
2. Reverse the unit; insert the gas container's nozzle vertically into Filling Valve.
3. When gas escapes from Filling Valve, remove the nozzle from the Filling Valve.

IGNITION

1. Move the FLOW CONTROL KNOB to the middle position.
2. Move the SWITCH upward and to the right.
3. Press down the IGNITION BUTTON to light up the unit.
4. When the unit is working as a soldering tool, 3 seconds after ignition, you will find the Soldering Head becomes red.

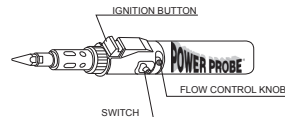


SHUTTING OFF

Move the SWITCH upward and to the left, the switch will return to 'OFF' position.

FLAME LENGTH OR TEMPERATURE ADJUSTMENT

After ignition, turn the FLOW CONTROL KNOB to right to increase the flame length of the torch or the temperature of soldering tip or hot air, to left to decrease the flame length or the temperature.



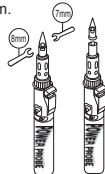
OPERATING TIPS

1. AFTER FILLING OR REFILLING WITH GAS, WAIT FOR APPROXIMATELY 2 MINUTES SO THAT THE GAS IN THE CYLINDER CAN BE STABLE.
2. Soldering Tips must be tin-plated before using them for the first time. A thin layer of solder should be applied to the Tip when it has been heated.
3. Soldering should NOT be carried out on "live" circuits, as this soldering unit does not possess any special electrical insulation.
4. Keep your soldering sponge moist.

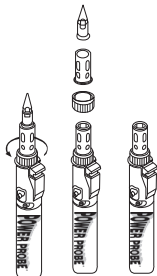
HOW TO FIT OR REPLACE DIFFERENT ACCESSORIES

NOTE: ALWAYS ALLOW UNIT TO COOL BEFORE REMOVING OR REPLACING TIPS.

1. REPLACE SOLDERING TIPS with 7mm Wrench on the Soldering Tip or Hot Blow Head and 8mm Wrench on the Soldering Head, you can tight Tip or Hot Blow Head or unscrew them.



2. When you unscrew the Nut, you can remove Guard and Soldering Head, then this unit becomes an open flame torch.



TROUBLE SHOOTING

PROBLEM	CAUSE	SOLUTION
Does not ignite	1. No gas 2. Gas pressure too high or too low	1. Refill butane gas 2. Slide flow control knob to lower or higher position
Torch flame has no proper power	1. Insufficient gas power	1. Refill butane gas
Tip does not heat up	1. Insufficient gas power 2. Catalyst is damaged	1. Refill butane gas 2. Replace with new part

